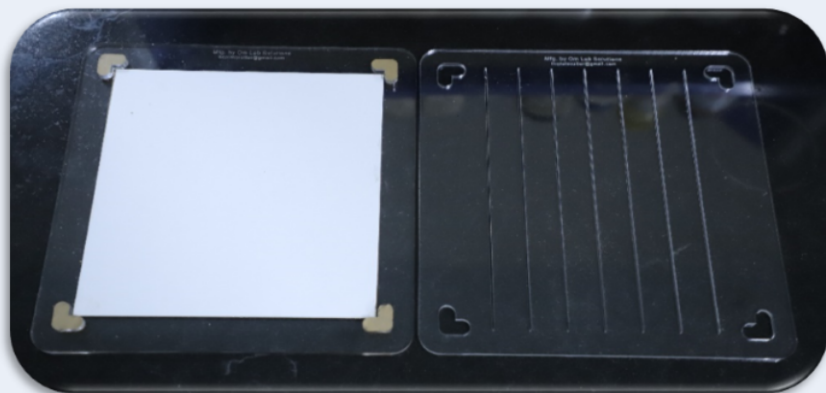
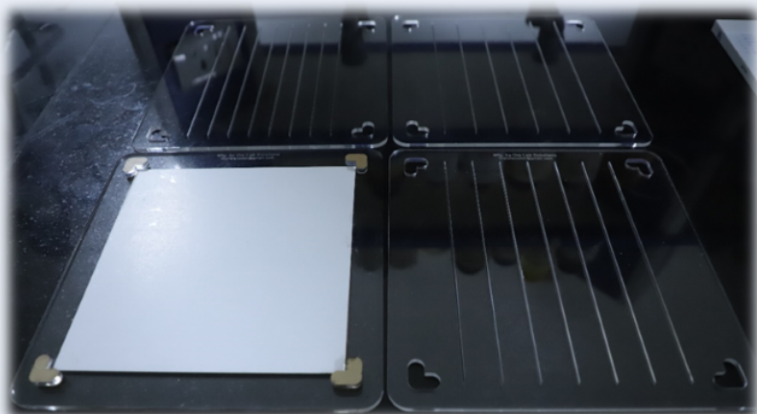


TLC Plate Cutter

- The TLC Plate Cutter (Design patent application No. 301016.) is very useful for cutting pre-coated silica TLC plates (backed with glass or aluminum).



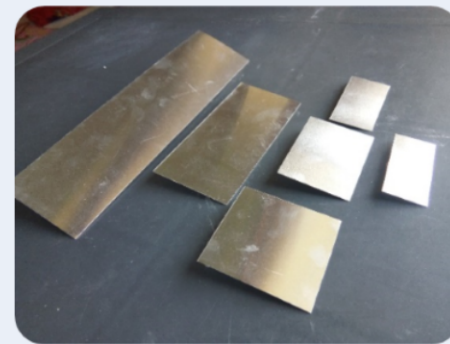
- The device comes as combo of one base and three frames (with different number of groves) which can cut different sizes. This is very safe device as the cutter runs into groves so there is no hand cuts anymore while cutting the TLC plates.



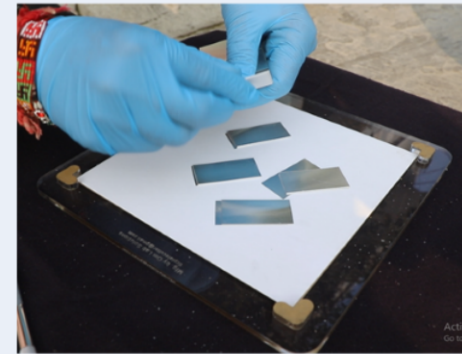
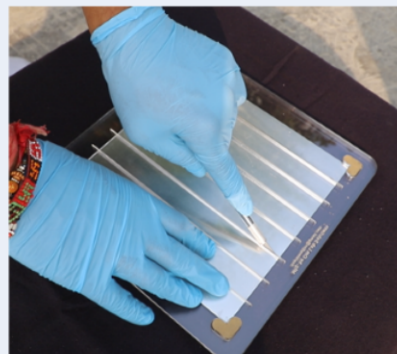
- It is very safe, easy to use and time saving as no marking is needed. Can also be used for cutting of glass plates.

TLC Plate Cutter

- Using this instrument we can cut a standard TLC plate (20cm*20cm) into various sizes such as 2*4cm, 2*5cm, 2.5*4cm, 2.5*5cm, 3*4cm, 3*5cm, and many more bigger sizes



- Reduces waste by cutting sharp edges.
- Saves a lot of time by having pre-fabricated groves of various sizes.
- Total 50 pieces of 2*4cm size can be obtained from a standard TLC plate (20cm*20cm).



- Dimensions: for each plate, Length & Width = 10 inch, Thickness = 6mm. Can cut TLC plates with a simple glass or paper cutter.